

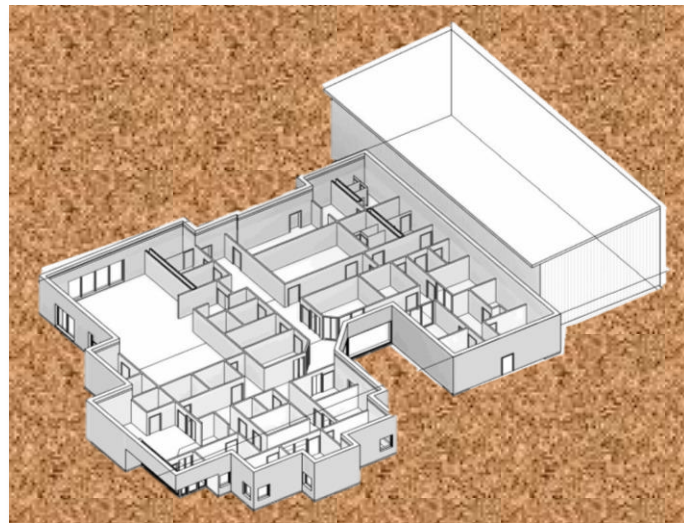
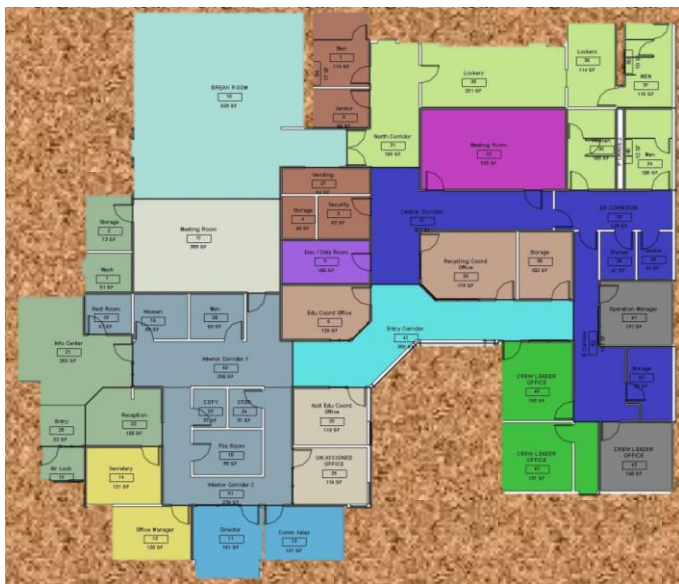


# Fayetteville Solid Waste Transfer Facility

Fayetteville, Arkansas

Brown Engineers is the MEP Engineer for this 5,200 SF expansion, currently in construction. The project also involves renovation of 2,800 SF within the existing operations facility.

In addition to MEP engineering, Brown performed energy modeling and life cycle cost analysis through all design phases. Integrating the energy and design models enabled rapid, well-informed design decisions, from initial building layout to the final location of every fixture.



## Project Features

- New Offices & Conference Rooms
- New Multi-Purpose Areas
- New Visitor Welcome Center
- New Water, Electric, Gas Service
- New Kitchen, Breakroom
- New Truck Drives a
- New Public Parking Lot
- New Pump Controls
- New Industrial Scales



Certification Goal:  
**LEED Silver**

## Sustainable Design Goals

The City of Fayetteville actively supports “green” design in practice as well as policy. This project demonstrates the City’s resolve to promote recycling and reduce waste.

By pursuing LEED Silver certification, Fayetteville plans to reduce operational costs and environmental impact:

- 20% reduction in energy usage
- 30% reduction in facility water use
- 50% reduction in landscape water use
- 75% daylighting in select areas